



## Renault Arkana

Standard Safety Equipment

2019



### Adult Occupant



96%

### Child Occupant



83%

### Vulnerable Road Users



75%

### Safety Assist



74%

## SPECIFICATION

Tested Model	Renault Captur 1.0 TCe, LHD
Body Type	- 5 door hatchback
Year Of Publication	2019
Kerb Weight	1243kg
VIN From Which Rating Applies	- all Arkanas
Class	Small Off-Road

## SAFETY EQUIPMENT

	Driver	Passenger	Rear
FRONTAL CRASH PROTECTION			
Frontal airbag	●	●	✗
Belt pretensioner	●	●	●
Belt loadlimiter	●	●	●
Knee airbag	✗	✗	✗
SIDE CRASH PROTECTION			
Side head airbag	●	●	●
Side chest airbag	●	●	✗
Side pelvis airbag	✗	✗	✗



## SAFETY EQUIPMENT (NEXT)

	Driver	Passenger	Rear
CHILD PROTECTION			
Isofix	—	●	●
Integrated CRS	—	✗	✗
Airbag cut-off switch	—	●	—
SAFETY ASSIST			
Seat Belt Reminder	●	●	●

OTHER SYSTEMS	
Active Bonnet (Hood)	✗
AEB Pedestrian	●
AEB Cyclist	●
AEB City	●
AEB Inter-Urban	●
Speed Assistance System	●
Lane Assist System	●

**Note:** Other equipment may be available on the vehicle but was not considered in the test year.

- Fitted to the vehicle as standard    ○ Fitted to the vehicle as part of the safety pack  
 ○ Not fitted to the test vehicle but available as option or as part of the safety pack    ✗ Not available    — Not applicable





ADULT OCCUPANT

Total 36.8 Pts / 96%



GOOD



ADEQUATE



MARGINAL



WEAK



POOR

Frontal Offset Deformable Barrier

8 / 8 Pts



Passenger



Driver

Frontal Full Width

7.7 / 8 Pts



Rear Passenger



Driver

Whiplash Rear Impact

1.6 / 2 Pts



Front seat



Rear seat

Lateral Impact

15.5 / 16 Pts



Car



Pole





ADULT OCCUPANT

Total 36.8 Pts / 96%



GOOD



ADEQUATE



MARGINAL



WEAK



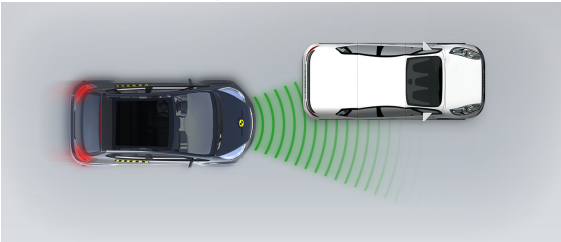
POOR

AEB City

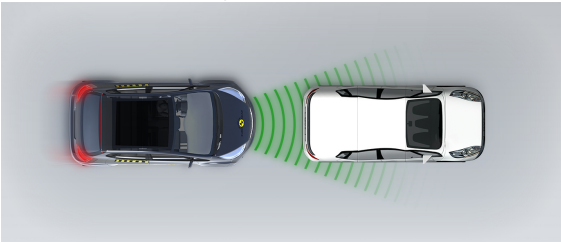


4.0 / 4 Pts

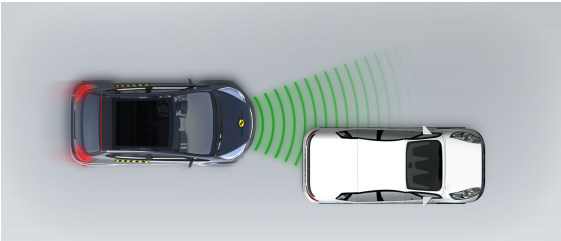
Approaching a stationary car: Left Offset



Approaching a stationary car: No Offset



Approaching a stationary car: Right Offset





## CHILD OCCUPANT

Total 41 Pts / 83%

■ GOOD
 ■ ADEQUATE
 ■ MARGINAL
 ■ WEAK
 ■ POOR

Crash Test Performance based on 6 &amp; 10 year old children

23.0 / 24 Pts

Frontal Impact

15 Pts



Lateral Impact

8 Pts



Restraint for 6 year old child: *Britax Römer Kidfix XP*  
 Restraint for 10 year old child: *Booster Cushion*

## Safety Features

7.0 / 13 Pts

	Front Passenger	2nd row outboard	2nd row center
Isofix	●	●	✗
i-Size	●	●	✗
Integrated CRS	✗	✗	✗

● Fitted to test car as standard
 ○ Not on test car but available as option
 ✗ Not available



## CRS Installation Check

11.0 / 12 Pts

● Install without problem    
 ● Install with care    
 ● Safety critical problem    
 ✗ Installation not allowed

## ■ i-Size CRS

Maxi Cosi 2way Pearl & 2wayFix (rearward) (iSize)



Maxi Cosi 2way Pearl & 2wayFix (forward) (iSize)



BeSafe iZi Kid X2 i-Size (iSize)



BeSafe iZi Flex FIT i-Size (iSize)



## ■ ISOFIX CRS

Maxi Cosi Cabriofix & FamilyFix (ISOFIX)



BeSafe iZi Kid X4 ISOfix (ISOFIX)



Britax Römer Duo Plus (ISOFIX)



Britax Römer KidFix XP (ISOFIX)







CHILD OCCUPANT

Total 41 Pts / 83%

■ Universal Belted CRS

Maxi Cosi Cabriofix (Belt)



Maxi Cosi Cabriofix & EasyBase2 (Belt)



Britax Römer King II LS (Belt)



Britax Römer KidFix XP (Belt)







## CHILD OCCUPANT

Total 41 Pts / 83%

	Seat Position			
	Front	2nd row		
	PASSENGER	LEFT	CENTER	RIGHT
Maxi Cosi 2way Pearl & 2wayFix (rearward) (iSize)	●	●	—	●
Maxi Cosi 2way Pearl & 2wayFix (forward) (iSize)	●	●	—	●
BeSafe iZi Kid X2 i-Size (iSize)	●	●	—	●
BeSafe iZi Flex FIT i-Size (iSize)	●	●	—	●
Maxi Cosi CabrioFix & FamilyFix (ISOFIX)	●	●	—	●
BeSafe iZi Kid X4 ISOfix (ISOFIX)	●	●	—	●
Britax Römer Duo Plus (ISOFIX)	●	●	—	●
Britax Römer KidFix XP (ISOFIX)	●	●	—	●
Maxi Cosi CabrioFix (Belt)	●	●	●	●
Maxi Cosi CabrioFix & EasyBase2 (Belt)	●	●	●	●
Britax Römer King II LS (Belt)	●	●	●	●
Britax Römer KidFix XP (Belt)	●	●	●	●

● Install without problem  
 ● Install with care  
 ● Safety critical problem  
 ✗ Installation not allowed  
 — Not available





## VULNERABLE ROAD USERS

Total 36.1 Pts / 75%

 GOOD

 ADEQUATE

 MARGINAL

 WEAK

 POOR

## Pedestrian

24.8 / 36 Pts



Head Impact 16.7 Pts

Pelvis Impact 2.1 Pts

Leg Impact 6.0 Pts

## Vulnerable Road Users

11.3 / 12 Pts

System Name

Active Emergency Braking System

Type

Auto-Brake with Forward Collision Warning

Operational From

10 km/h





## VULNERABLE ROAD USERS

Total 36.1 Pts / 75%

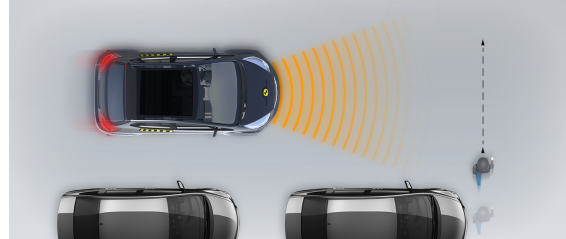
## AEB Pedestrian

## ■ Day time

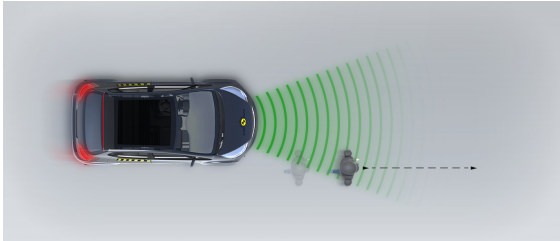
Adult crossing the road



Child running from behind parked vehicles



Adult along the roadside

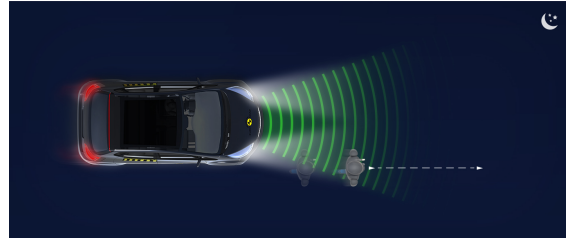


## ■ Night time

Adult crossing the road

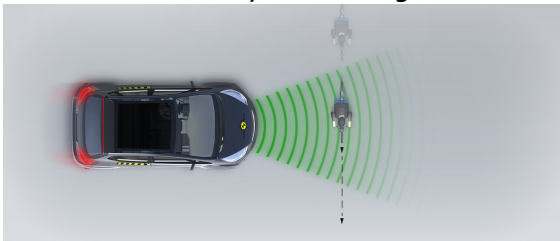


Adult along the roadside

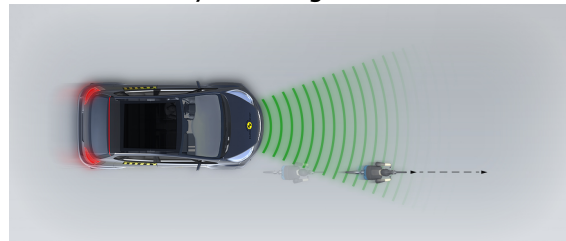


## AEB Cyclist

Cyclist crossing



Cyclist along the roadside







## SAFETY ASSIST

Total 9.6 Pts / 74%

 GOOD


 ADEQUATE

 MARGINAL

 WEAK


 POOR









## Speed Assistance

 2.5 / 3 Pts

System Name	Speed Limiter
Speed Limit Information Function	Camera based
Speed Limitation Function	System advised (accurate to 5km/h)


## Seatbelt Reminder



 3.0 / 3 Pts

Applies To	All Seats		
Warning	Driver Seat	Front Passenger(s)	Rear Passenger(s)
Visual			
Audible			
Occupant Detection	—		

 Pass
  Fail
 — Not available

## Lane Support

 2.0 / 4 Pts

System Name	Lane Keep Assist
Type	LKA (including LDW)
Operational From	70 km/h
PERFORMANCE	
Lane Keep Assist	 GOOD
Human Machine Interface	 ADEQUATE





SAFETY ASSIST

Total 9.6 Pts / 74%



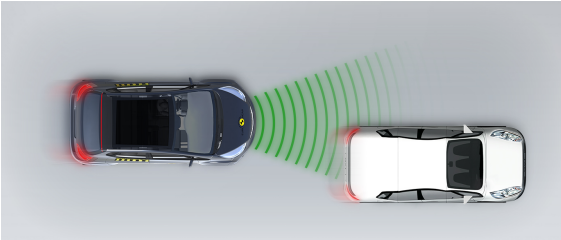
AEB Inter-Urban

2.2 / 3 Pts

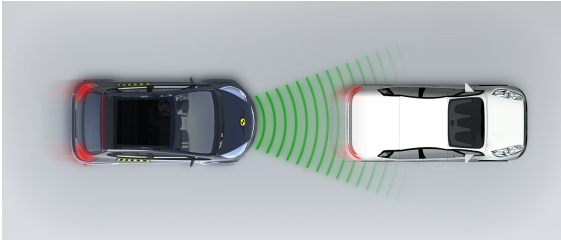
System Name	Active Emergency Braking System
Type	Autonomous Emergency Braking and Forward Collision Warning
Operational From	7 km/h

■ Autobrake function only

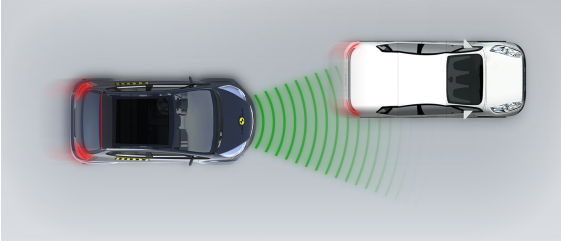
Approaching a slower moving car



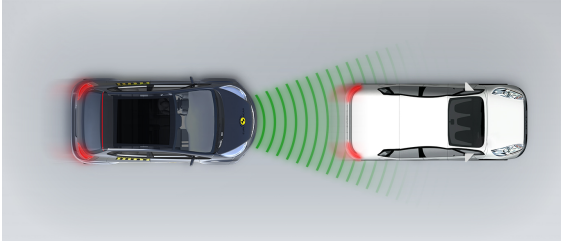
Approaching a slower moving car



Approaching a slower moving car



Approaching a braking car





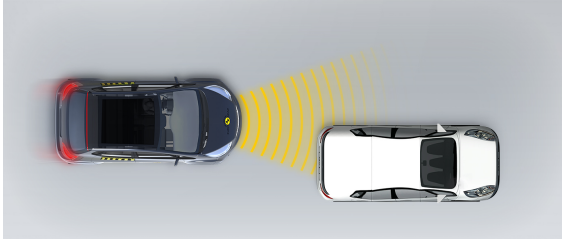


## SAFETY ASSIST

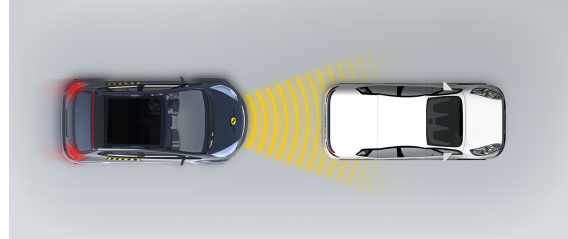
Total 9.6 Pts / 74%

## ■ Driver reacts to warning

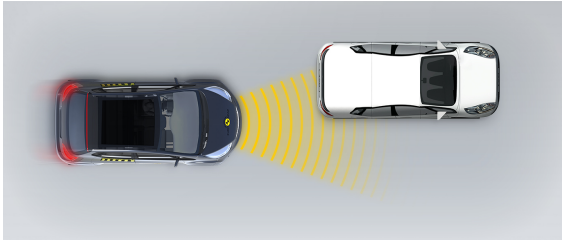
Approaching a stationary car



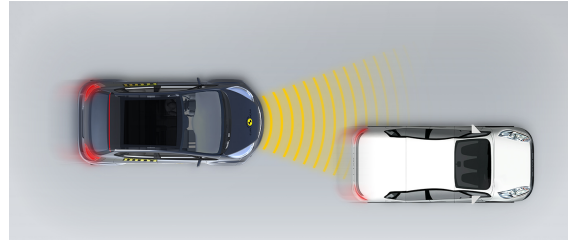
Approaching a stationary car



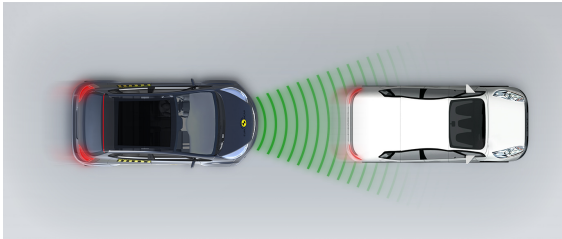
Approaching a stationary car



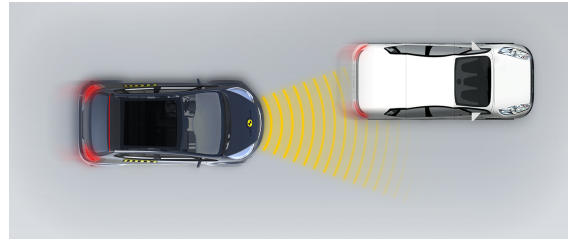
Approaching a slower moving car



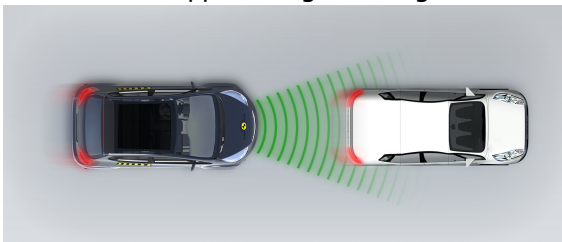
Approaching a slower moving car



Approaching a slower moving car



Approaching a braking car





RATING VALIDITY

Annual Reviews and Facelifts

Date	Event	Outcome	
March 2021	Rating Published	2019 ★ ★ ★ ★ ★	✓