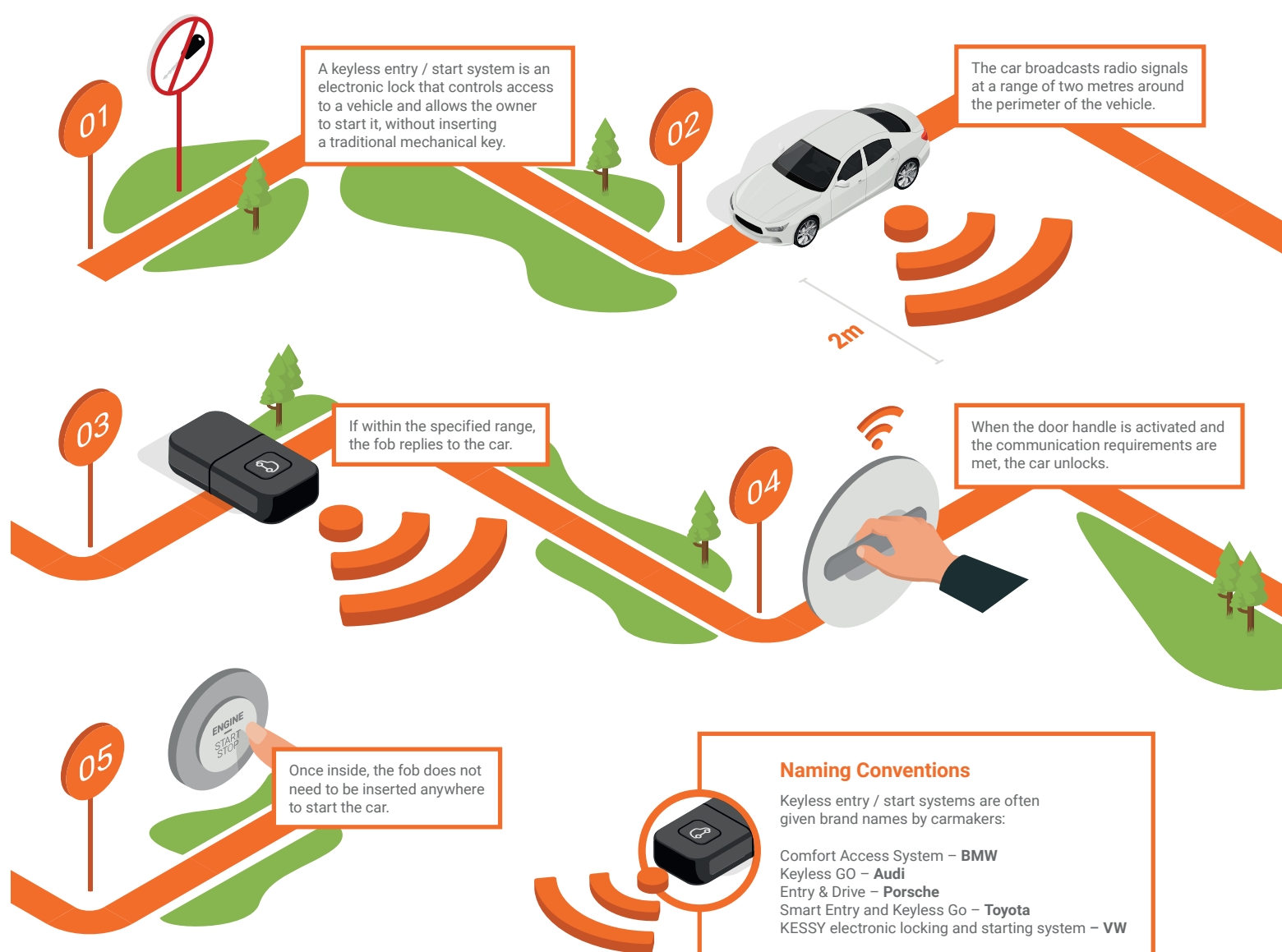


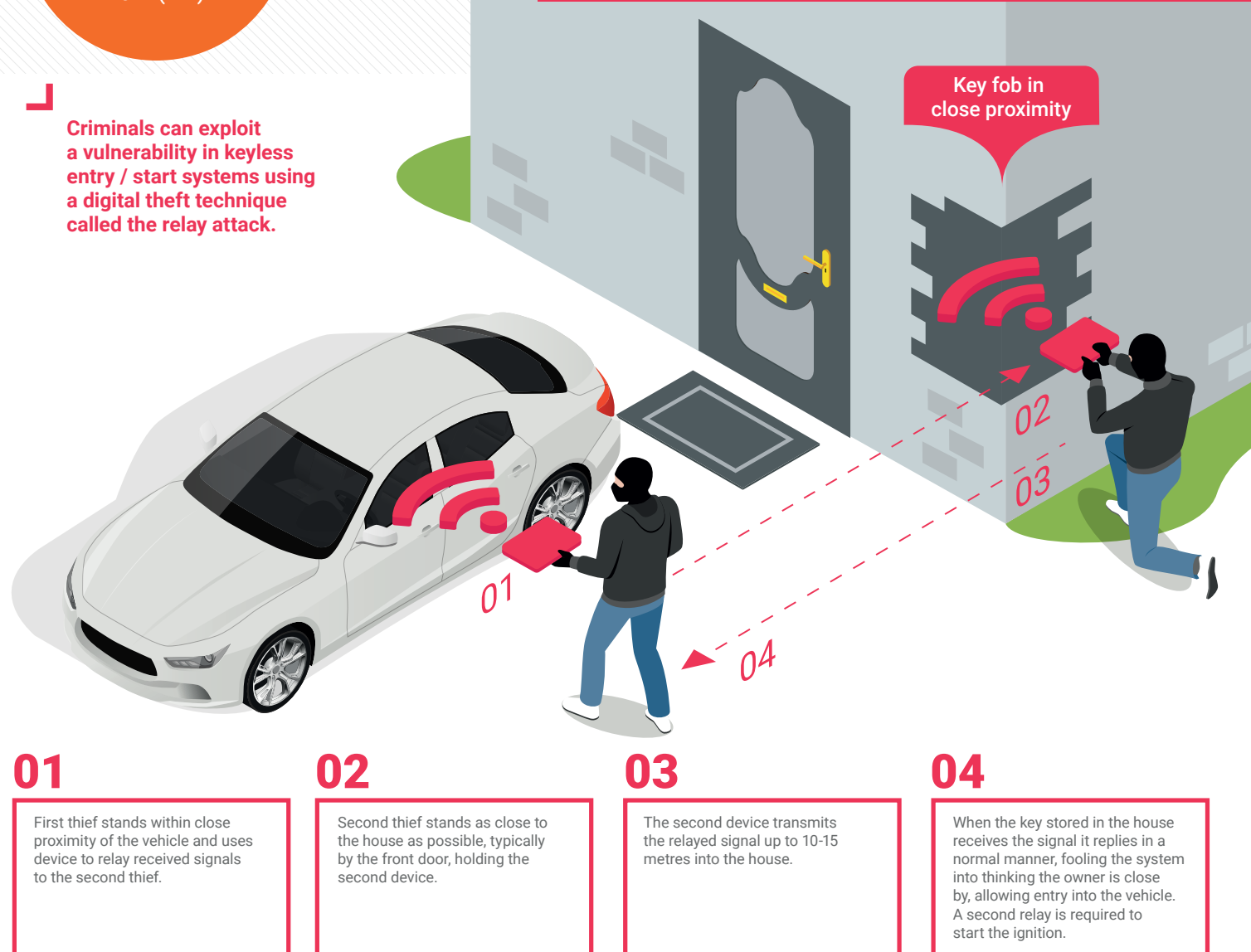
What is keyless entry / start?



Theft claims in the first quarter of 2019 were at their **highest level** for any quarter since 2012 (ABI)

Criminals can exploit a vulnerability in keyless entry / start systems using a digital theft technique called the relay attack.

How the relay attack works

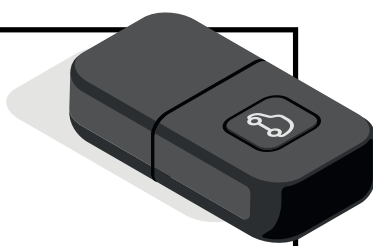


What's being done about it?

Motion Sensor Keys

Motion sensor keys contain an internal timer, putting the key to sleep when it isn't moving – such as when the keys are stored overnight.

When in 'sleep mode' the fob will not interact with the equipment criminals use to break into cars.



Thatcham Research Security Ratings

Thatcham Research has launched security ratings to help consumers better understand the theft risk of new cars, while encouraging carmakers to bring in fixes.

If a car is vulnerable to the relay attack, it is immediately downgraded to a Poor rating.



Insurers made a payment to a car crime victim **every eight minutes** in the first quarter of 2019 (ABI)

Wireless Technologies

Some carmakers are switching to different wireless technologies such as Ultra Wide Band (UWB) and Bluetooth Low Energy (BLE).



£376 million was paid out on thefts by insurers in 2018 (ABI)

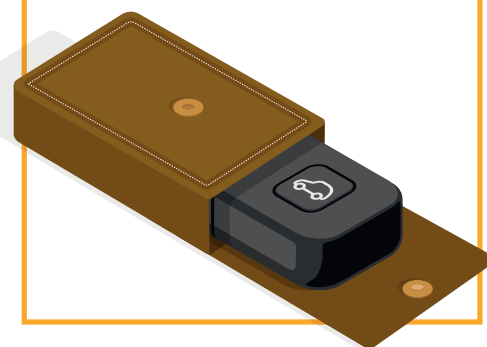
What can drivers do about it?

Ask your dealer

- Can your keyless fob be switched off overnight?
- Is keyless entry / start optional or standard fit?
- Are there any software updates?
- Is a motion sensor enabled fob available?

Make sure shielding devices work

Faraday pouches and containers can block the signal from a keyless entry fob – but test they are effective first.



Don't make it easy

Store all keys – spares included – away from household entry points. Be vigilant and report any suspicious behaviour to the Police.

Car thefts **increased 9%** year on year 2017 to 2018 (Office for National Statistics)

